

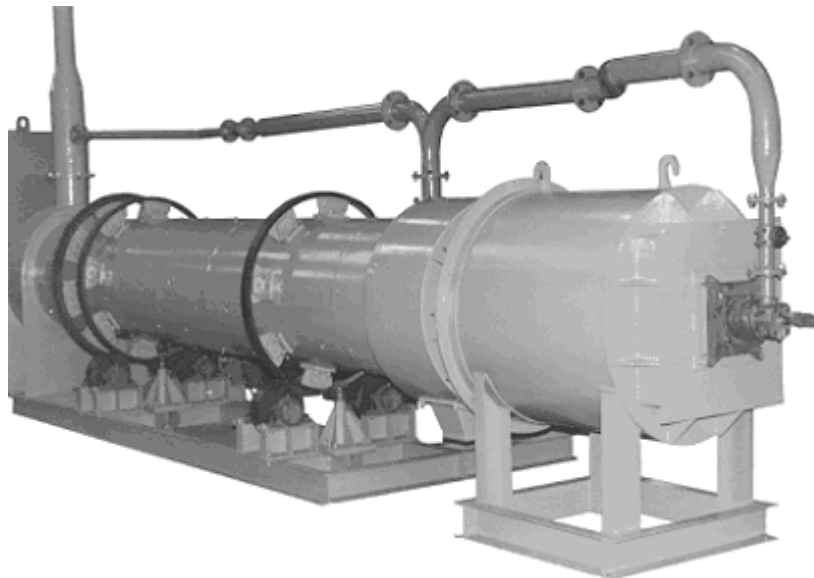
# WESMAN

## FOUNDRIY EQUIPMENT DIVISION

# ROTARY SAND DRYER

FOUNDRIY EQUIPMENT

**WESMAN ROTARY DRYERS** are designed to dry granular materials such as foundry sand, minerals and ores. The dryer consists of a cylindrical shell fitted with two machined steel tyres rotated horizontally on four thrust rollers, with a stationary combustion chamber at one end and a feeding arrangement at the other. The shell is slightly inclined towards the combustion chamber to generate counter-currents from the products of combustion.



The inside of the shell is fitted with longitudinal flights to increase contact between wet solid particles and hot gases. The shell is rotated by friction between the tyres and rollers, which in turn are driven by a motor through a worm reduction gear and other drive elements.

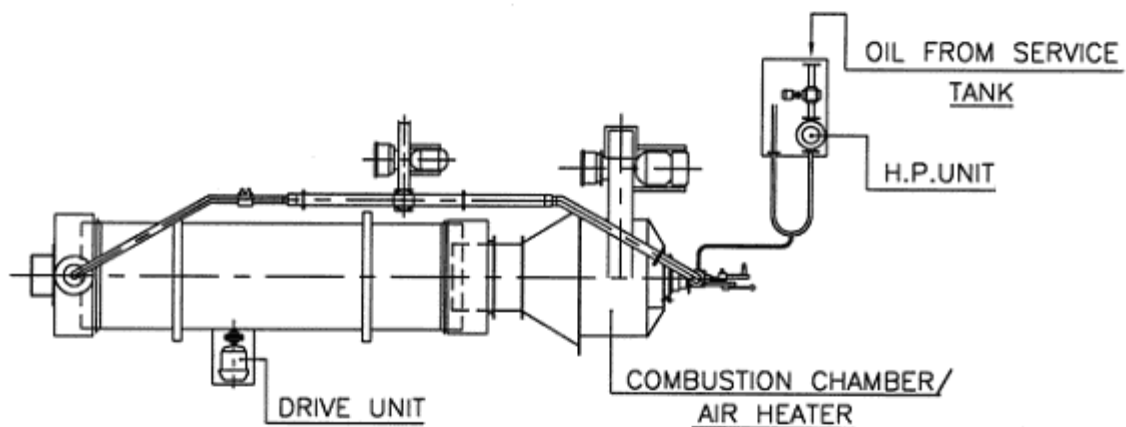
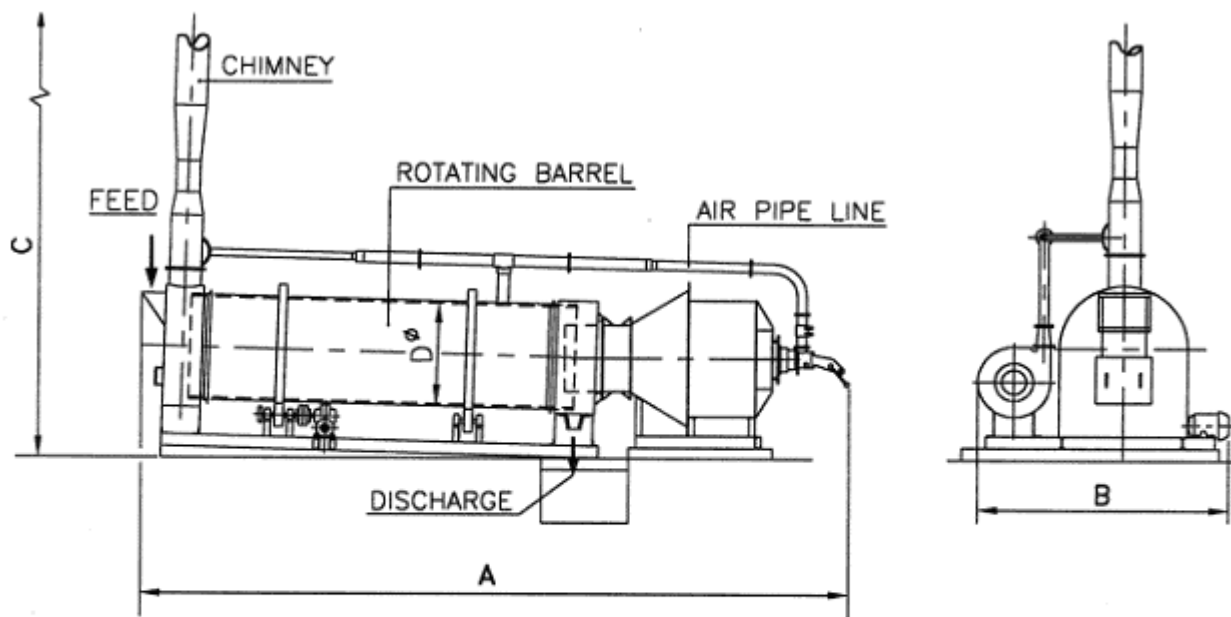
The combustion chamber is refractory-lined and has a Wesman Schieldrop Self Proportioning Burner which operates on HSD, LDO, furnace oil or LSHS. Gas firing options are also available. Other combustion equipment including combustion air blower and oil pumping and heating unit are also supplied.

For low temperature drying applications with temperature control features, Wesman offers an alternative dryer design with an air heater in place of the combustion chamber. Dust extraction equipment is also available as an option.

SEE REVERSE FOR INSTALLATION DIMENSIONS

## STAR FEATURES

- ▶ Proven design with energy efficient features
- ▶ Supplied with acclaimed Wesman Schieldrop combustion equipment
- ▶ Low maintenance
- ▶ Simple and robust construction
- ▶ Low noise
- ▶ Temperature control feature with optional air heater design



DRYER MODEL	CAPACITY	A (mm)	B (mm)	C (mm)	D $\phi$ (mm)	BARREL RPM	DRIVE
RD-170AH+	17 TONS/HR	18500	6500	4000*	2500	4	22KW
RD-100AH+	10 TONS/HR	15410	5200	3300*	2000	4	11KW
RD-50AH	5 TONS/HR	9100	3150	5960	1350	5	5.5KW
RD-50	5 TONS/HR	8030	3000	5960	1350	5	5.5KW
RD-15AH	1.5 TONS/HR	8500	2600	5500	785	8	2.2KW
RD-15	1.5 TONS/HR	7600	2450	5500	785	8	2.2KW
RD-5	0.5 TONS/HR	3850	1450	1000*	450	5	0.75KW

**NOTE:**

1. \*Without Chimney. AH in Model number indicates Air Heater option. +With Dust Extraction System.
2. All dimensions given are approximate and non-binding.



**THE WESMAN  
ENGINEERING CO PVT LTD**

WESMAN CENTER, 8 MAYFAIR ROAD, KOLKATA 700019, INDIA  
 TEL: +91 (33) 22405320, 22816406  
 FAX: +91 (33) 22478050, 22816402  
 EMAIL: foundry@wesman.com INTERNET: www.wesman.com

KOLKATA ■ NEW DELHI ■ MUMBAI ■ CHENNAI ■ PUNE ■ BANGALORE ■ AHMEDABAD ■ HYDERABAD