

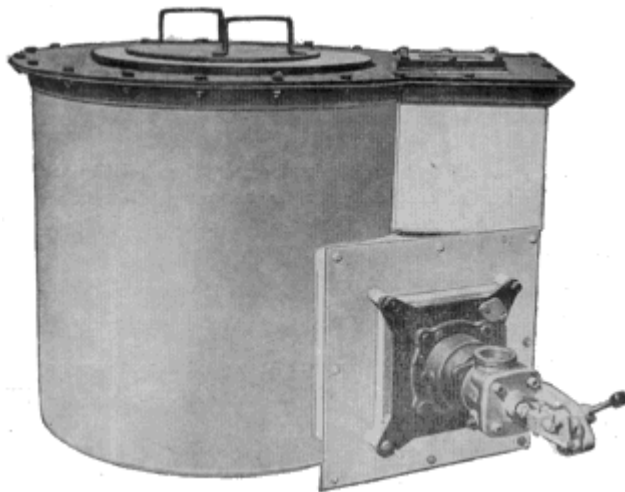
WESMAN

FOUNDRY EQUIPMENT DIVISION

BALEOUT FURNACE FOR BRASS AND GUN METAL

FOUNDRY EQUIPMENT

WESMAN BALEOUT FURNACES FOR BRASS AND GUN METAL are efficient and complete melting and holding units. The furnace is refractory-lined and supplied as a complete package which includes blower, burner and crucible. The durable body is constructed from thick reinforced mild steel plates. The crucible is available in options of either cast iron, graphite or silicon carbide.



The furnace is supplied with a Wesman Schieldrop oil burner (LPG or natural gas firing is also available as an option). Combustion air is provided by a Wesman centrifugal blower. Preheated oil at constant temperature and pressure is supplied to the burner by a Wesman heating and pumping unit.

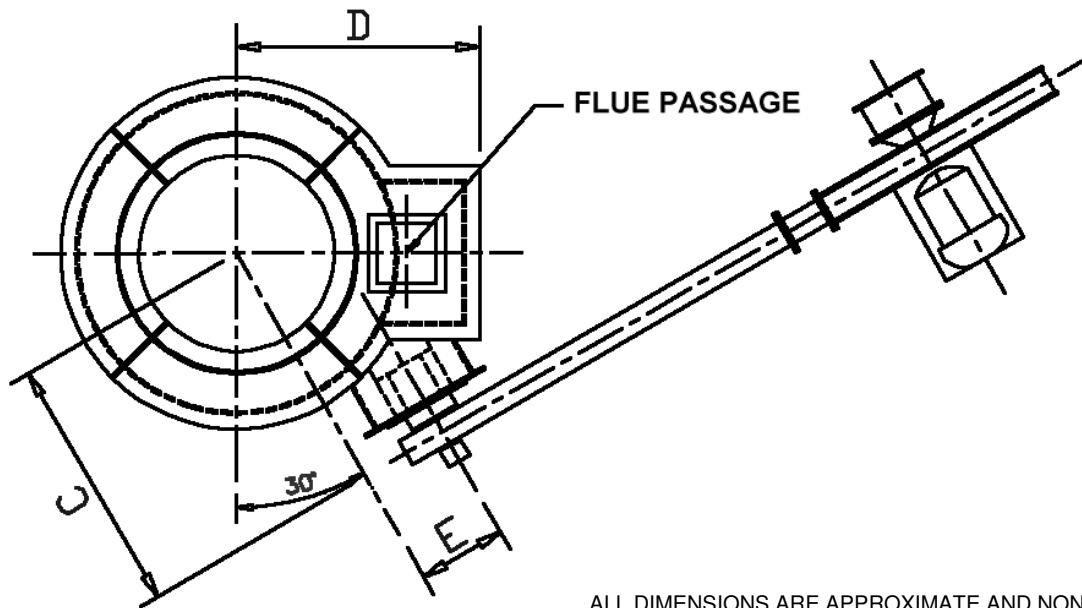
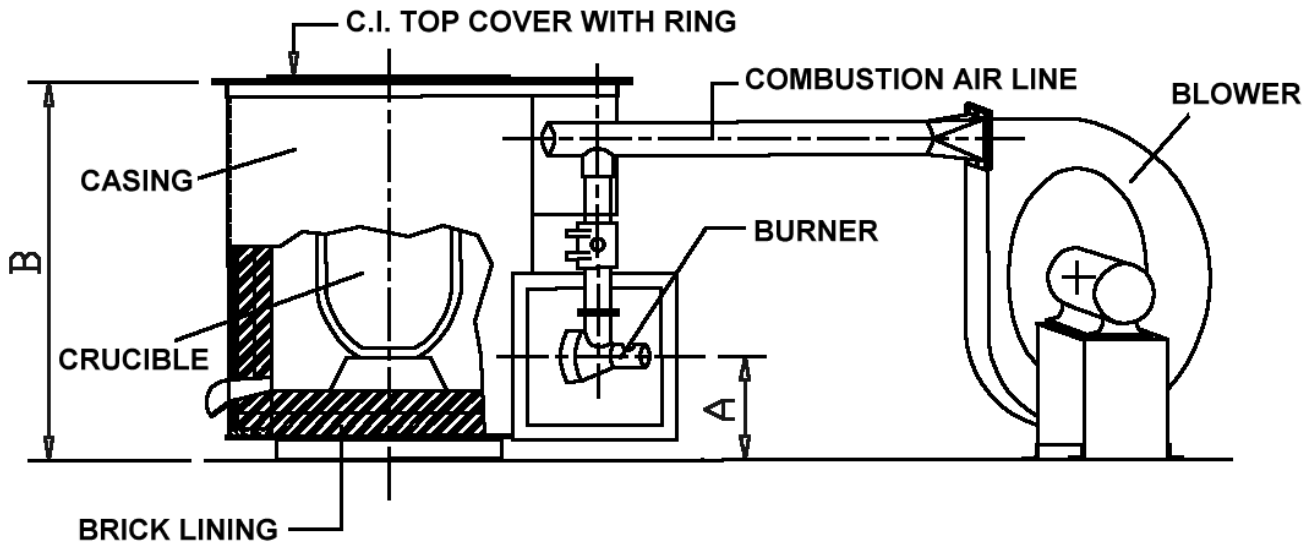
The burner fires tangentially inside the shell lining into a circular combustion space so that the hot gases surround the crucible, ensuring uniform heating. Waste gases pass out through a flue at one side, allowing reasonable working conditions for the operator. Normally the flue discharge is upward for top exhaust. Optionally, waste gases can be collected in a fume extraction hood for discharge outside the production area.

OPTIONAL ACCESSORIES: ■ OIL SERVICE TANK ■ OUTFLOW HEATER ■ FUME EXTRACTION UNIT ■ MOTOR STARTER ■ SEMI-ROTARY PUMP FOR OIL TANK

SEE REVERSE FOR INSTALLATION DIMENSIONS

STAR FEATURES

- ▶ Rugged construction
- ▶ Efficient non-ferrous melting and holding
- ▶ Easy to operate and maintain
- ▶ Fitted with Wesman's highly acclaimed combustion equipment
- ▶ Excellent fuel economy
- ▶ Countrywide after-sales service
- ▶ Wesman quality built into every machine



ALL DIMENSIONS ARE APPROXIMATE AND NON-BINDING

MODEL	CHARGE IN KG BRASS	MELT TIME IN MIN		LITRES/ 100 KG BRASS	DIMENSIONS IN MM				
		FROM COLD	SUBSEQ CHARGE		A	B	C	D	E
GB-1	150	180	150	22-25	350	934	827	774	215
GB-2	350	180	150	22-25	350	934	980	820	300
GB-3	500	180	150	22-25	350	934	980	820	300
GB-4	600	180	150	22-25	450	1048	980	820	300
GB-5	750	180	150	22-25	450	1067	1031	871	349
GB-6	1000	180	150	22-25	400	1067	1031	871	349



**THE WESMAN
ENGINEERING CO PVT LTD**

WESMAN CENTER, 8 MAYFAIR ROAD, KOLKATA 700019, INDIA
 TEL: +91 (33) 22405320, 22816406
 FAX: +91 (33) 22478050, 22816402
 EMAIL: foundry@wesman.com INTERNET: www.wesman.com

KOLKATA ■ NEW DELHI ■ MUMBAI ■ CHENNAI ■ PUNE ■ BANGALORE ■ AHMEDABAD ■ HYDERABAD