

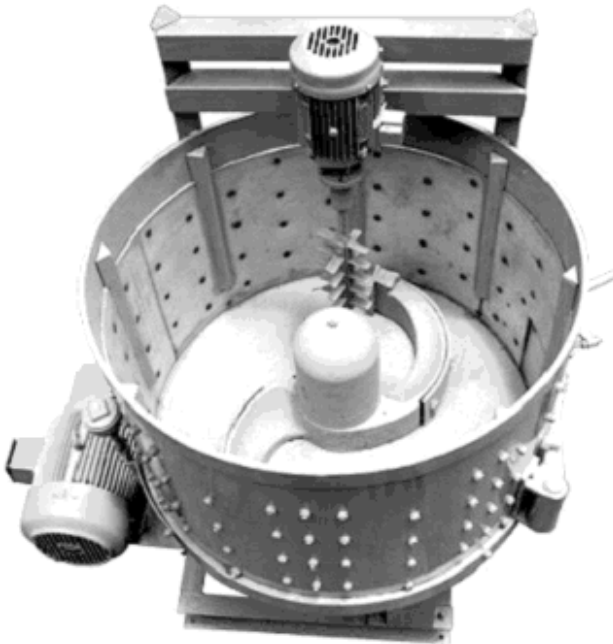
WESMAN

FOUNDRY EQUIPMENT DIVISION

INTENSIVE ROTOMIXER

FOUNDRY EQUIPMENT

WESMAN'S NEW ROTOMIX SERIES MIXERS are designed for intensive mixing of green sand with bentonite or other additives to prepare moulding sand with high compactability. Manufactured and assembled in Wesman's modern machine building plant, the Rotomix is constructed from heavy steel sections for durability.



The blade rotation compresses the sand and cascades it from the ribbed walls to the centre dome. The high-speed rotor, mounted vertically downward into the pan and driven by a separate motor, also has replaceable mixing blades. The rotor churns, tumbles and throws the sand-additive aggregates against each other, producing intensive mixing. The batch is prepared in a shorter cycle time, and is discharged as a completely aerated and perfectly homogenous mixture.

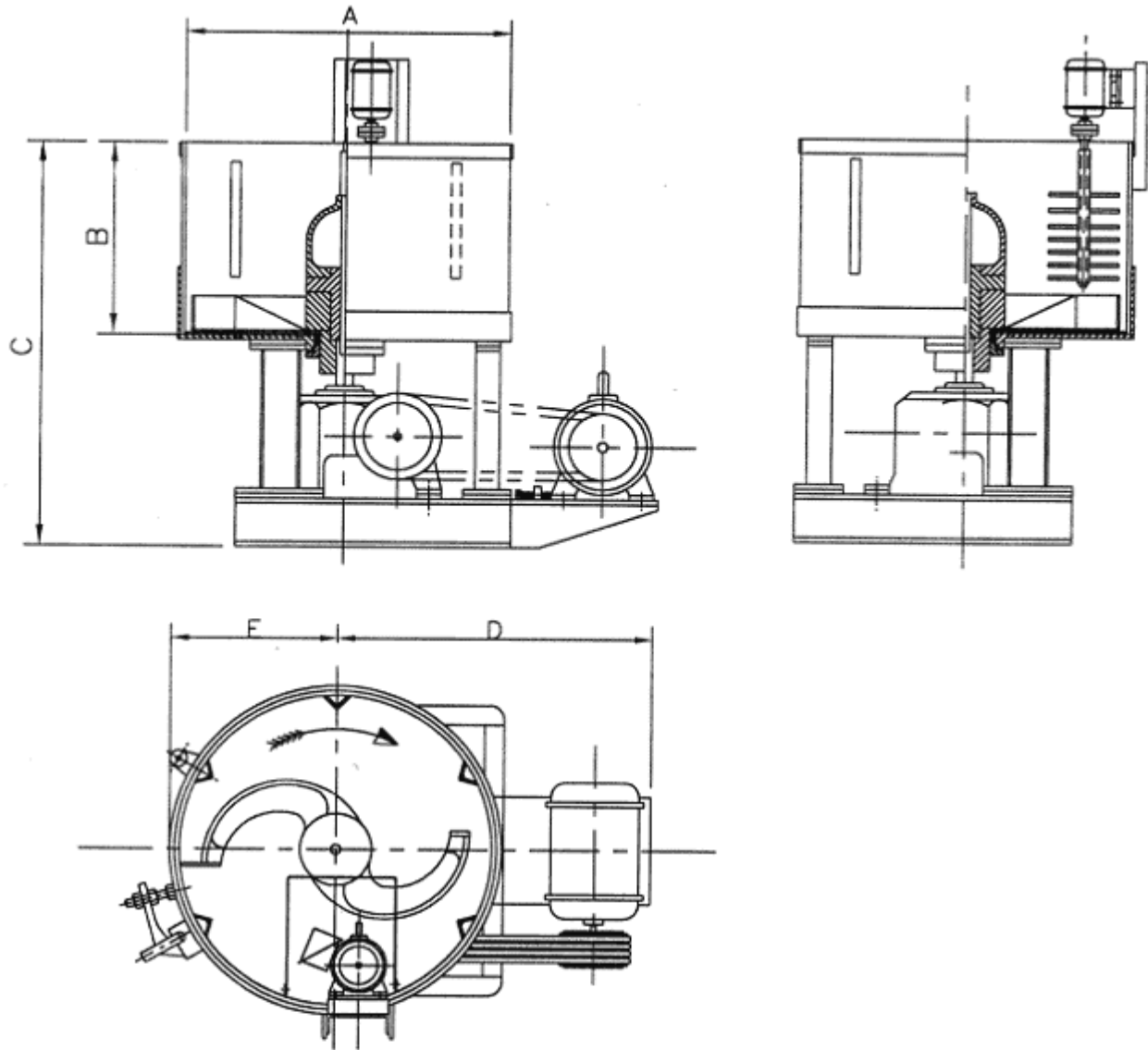
SEE REVERSE FOR INSTALLATION DIMENSIONS

For quicker servicing, the Rotomix has four easily detachable subassemblies: mixing chamber, mixing blades, motorised gear drive unit for mixing blades, and high-speed vertical rotor with drive unit.

The mixing blades have adjustable and replaceable hard-faced side wear plates and end scraper tips, and rotates on a vertical axis through the mixing pan. The pan is fitted with vertical ribs for enhanced lump-breaking and mixing action.

STAR FEATURES

- ▶ Shorter mixing time
- ▶ Economic and efficient usage of bentonite
- ▶ Rugged construction
- ▶ Easy to operate and maintain
- ▶ Proven mixer design
- ▶ Countrywide after-sales service
- ▶ Wesman quality built into every machine



MODEL	BATCH CAPACITY	MOTOR H.P.		A	B	C	D	E
		MAIN	AUXILARY					
RM-0	100 KG.	5	0.5	613	397	832	717	322
RM-1	175 KG.	7.5	1	788	484	1000	819	418
RM-2	300 KG.	10	1	976	610	1163	977	515
RM-3	500 KG.	20	2	1200	625	1305	1095	630

ALL DIMENSIONS GIVEN ARE APPROXIMATE & NON-BINDING

NOTES:

- BATCH CAPACITY SHOWN ABOVE ARE NOMINAL
- FOR MODEL RM-2 & RM-3 SKIP HOIST CHARGER CAN BE SUPPLIED (OPTIONAL)
- PNEMAUTIC DISCHARGE DOOR OPERATION MAY BE SUPPLIED (OPTIONAL)
- DIMENSION 'C' MAY VARY ACORDING TO GEARBOX MAKE
- ALL MOTORS ARE TEFC,400/440V AC,3 PHASE,50 HZ.(STARTER MOTOR IS OPTIONAL)



THE WESMAN ENGINEERING CO PVT LTD

WESMAN CENTER, 8 MAYFAIR ROAD, KOLKATA 700019, INDIA
 TEL: +91 (33) 22405320, 22816406
 FAX: +91 (33) 22478050, 22816402
 EMAIL: foundry@wesman.com INTERNET: www.wesman.com

KOLKATA ■ NEW DELHI ■ MUMBAI ■ CHENNAI ■ PUNE ■ BANGALORE ■ AHMEDABAD ■ HYDERABAD